

## 208~230V Heat Recovery

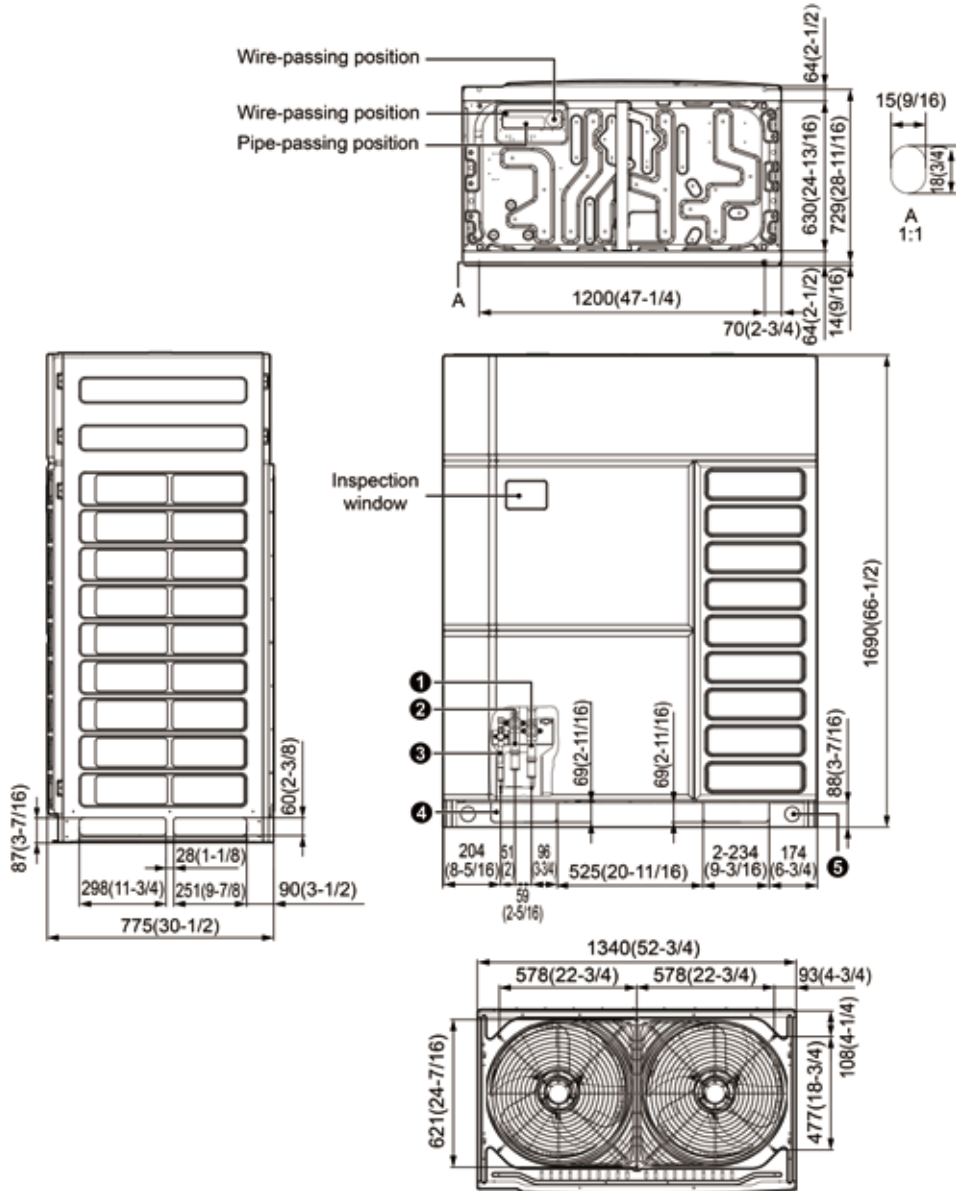
Model:  
GMV-VQ192WM/C-F(U)



Specifications	Unit	Parameter
Model	—	GMV-VQ192WM/C-F(U)
<b>Performance</b>		
Rated Cooling Capacity	kBtu/h	178
Rated Heating Capacity	kBtu/h	206
Capacity	Cooling(kw)	52.17
	Heating(kw)	60.38
Sound Pressure Level	dB(A)	63
Operating Temperature Range	Cooling ( Outdoor ) °C/°F	(14°F)-10°C~(131°F)55°C
	Heating ( Outdoor ) °C/°F	(-13°F)-25°C~(75.2°F)24°C
<b>AHRI Ratings(Ducted/Non-Ducted)</b>		
EER	(Btu/h)/W	10.6/10.6
IEER	(Btu/h)/W	19/20
COP	W/W	3.2/3.2
<b>Electrical Data</b>		
Power Supply	V/Ph/Hz	208/230
Maximum Overcurrent Protection (MOP)	A	100
Minimum Circuit Amps (MCA)	A	89.4
<b>Fan</b>		
Type x Quantity	—	Axial-flow x 2
Air Flow Volume	CFM	9710
Fan Motor Power Output	W	750+750
Max.External Static Pressure ( ESP )	Pa/In.W.G	110/0.44
<b>Compressor</b>		
Compressor Type x Quantity	—	Inverter Scroll x 2
Compressor Refrigerant Oil Type	—	FV68H
Compressor Refrigerant Oil Charge Volume	L/Gal	7.2/1.9
<b>Refrigerant Piping</b>		
Connection Pipe	High Pressure Gas(mm/inch)	1-1/8/Φ28.6
	Low Pressure Gas(mm/inch)	1-1/8/Φ28.6
	Liquid(mm/inch)	5/8/Φ15.9
Max. Equivalent Connection Pipe Length ( ODU to IDU )	m/ft	200/656-1/8
Refrigerant Charge	kg/oz	11.7/412.7
Refrigerant	—	R410A
<b>Dimension/Weight</b>		
Dimensions (H×W×D)	mm(inch)	1609X1340X775 (66-1/2X52-3/4X30-1/2)
Net Weight	kg/lbs	405/892.87
<b>Other</b>		
Indoor Unit	Total Capacity ( % )	50%~135%
	Max Connectable Quantity	33
Certification	—	ETL/AHRI
Condenser Fin Color	—	GOLD
Protection Devices	High Pressure	High pressure sensor, High pressure switch 601 psi (4.15 MPa)
	Inverter Circuit	Over-heat protection, Over-current protection
	Compressor	Discharge temp protection, Over-current protection

Job Name:		Date:	
System Reference No.:			
Engineer Signature:			

### Outline and Physical Dimensions of GMV-VQ192WM/C-F(U).



Unit: mm(inch)

No.	Name	Pipe diameter
		GMV-VQ192WM/C-F(U)
①	Low pressure gas pipe	Φ28.6(1-1/8)
②	High pressure gas pipe	Φ28.6(1-1/8)
③	Liquid pipe	Φ15.9(5/8)
④	Pipe and wiring passing hole (L×W)	234×69 (9-3/16×2-11/16)
⑤	Hoist hole	Φ50(1-15/16)

