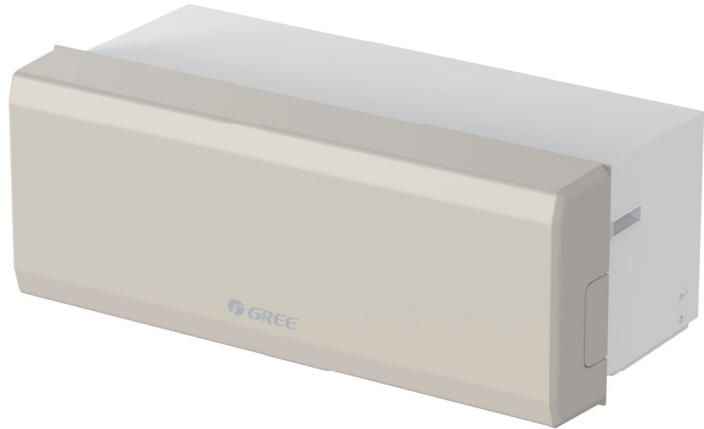


GMV5 **208-230V Heat Pump PTAC VRF**

**Model:
GMV-12WP/A-T(U)**



Specification

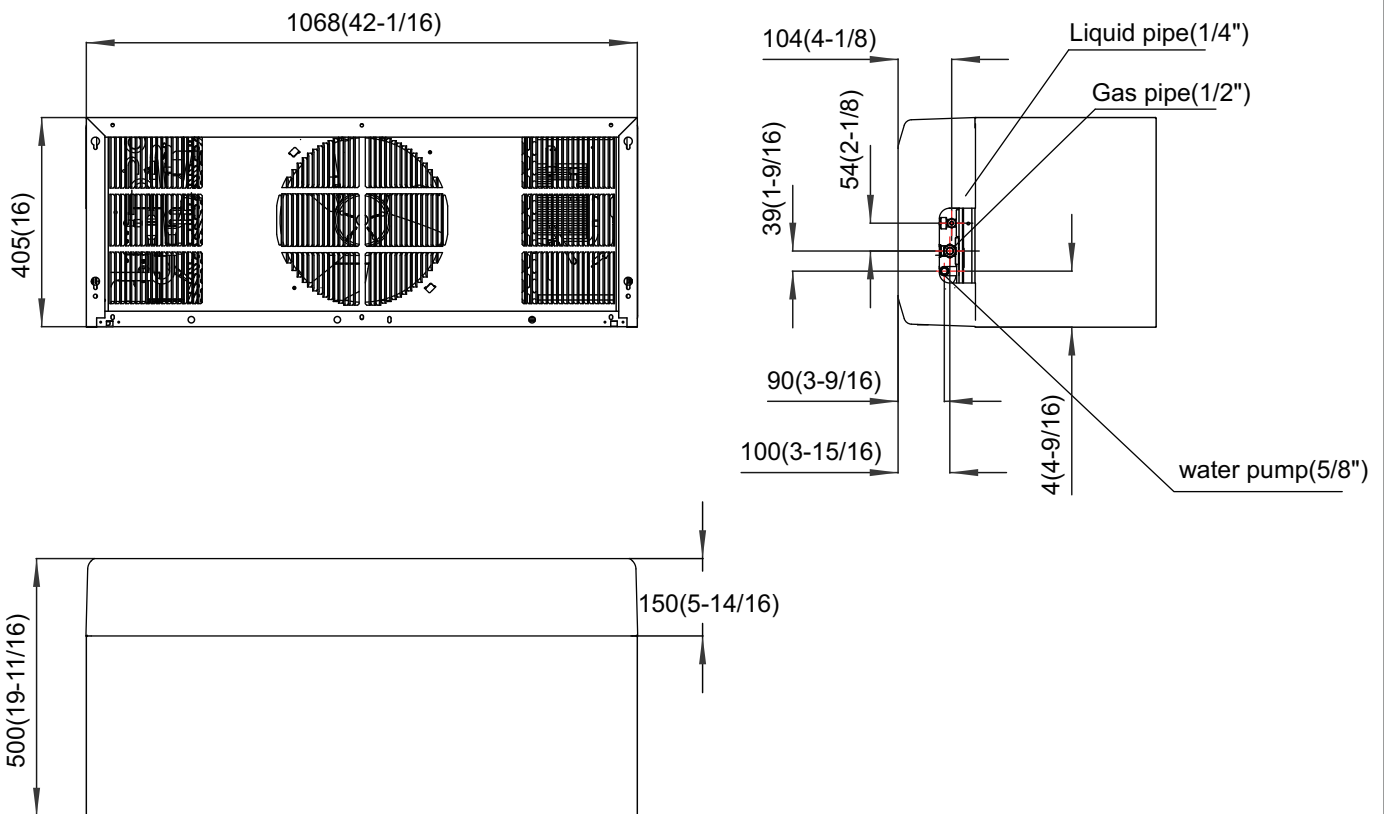
Specification		
Model	-	GMV-12WP/A-T(U)
Performance		
Cooling Capacity	kBtu/h	12.00
Heating Capacity	kBtu/h	12.00
Operating Temperature Range (Outdoor)	Cooling(°F)	23~118.4
	Heating(°F)	-4~80.6
AHRI Ratings(Ducted/Non-Ducted)	SEER	15.50
Suond Pessure Levels	dB(A)	57
Dimension		
External Dimensions (H x W x D)	Inch.	16×42-1/16×19-11/16
Net Weight	Lbs.(kg)	121
(Brazed) From ODU to First Joint or Header(In./mm)	Liquid Pipe(inch)	φ1/4
	Gas Pipe(inch)	φ1/2
Electrical Data		
Power Supply Requirement	Voltage,Phase, Hertz	208~230/1/60
Power Consumption	Cooling(Kw)	1.43
	Heating(Kw)	1.17
Minimum Circuit Ampacity (MCA)	A	13.5
Maximum Overcurrent Protection (MOP)	A	15
Fan		
Type x Quantity	-	Axial-flow x 1
Airflow Volume	CFM	500
Other		
Indoor Unit	Total Capacity	50 to 130% of ODU capacity
	Max Connectable Quantity	2
Max. Equivalent Connection Pipe Length(Outdoor to Last Indoor)	m	30
Compressor Operating Range	-	10%~100%
Compressor Type x Quantity	-	Inverter Rotary x 1
Refrigerant	-	R410A
Refrigerant Charge	oz	28.2
Outdoor Unit Loading Quantity(20' Container)	unit	52
Outdoor Unit Loading Quantity(40' Container)	unit	120
Outdoor Unit Loading Quantity(40' High Cube Container)	unit	150

Job Name:

Schedule Reference:

Date:

Outline and Physical Dimensions of GMV-12WP/A-T(U).



Dimension:mm(Inch)



GREE ELECTRIC APPLIANCES, INC. OF ZHUHAI

Add: West Jinji Rd., Qianshan, Zhuhai, Guangdong, China, 519070

Tel: (+86-756) 8522218 Fax: (+86-756)8669426 E-mail: gree@gree.com.cn www.gree.com