



Change for Life

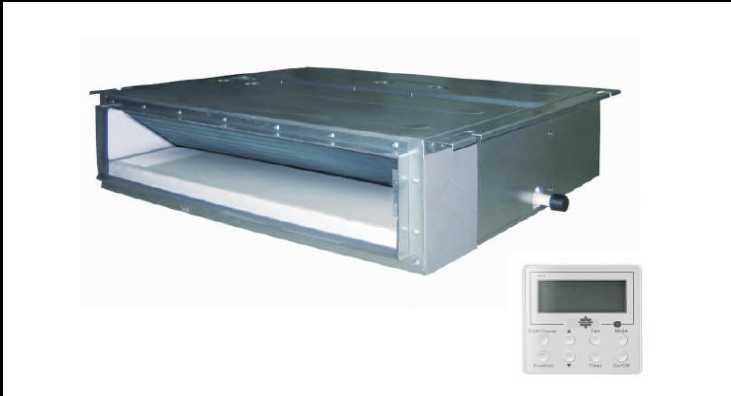
Submittal Data : IDU Gree Slim Ducted **GFH<18>EA-D3DNA1A/I**

Job Name :	Date :
Engineer :	Submitted to :
Location :	Submitted by :
Tag # :	Schedule / Drawing # :

For : Reference Approval Construction

GENERAL FEATURES

- * Quite Operation - Multi-Speed Fan
- * Medium Static Pressure Capability 0.04WG
- * Slim Line Construction 7 - 7/8 in. high* Internal Condensate Drain Pump
- * Flexible Return air from bottom or rear.* Wired Remote Controller
- * Flare connection
- * Condensate Overflow Protection



(Picture is for representation purpose and actual shape may vary)

Cooling	Air Flow
---------	----------

Cooling Capacity	15,300 Btu/h	Air Flow Volume	411.95/ 353.1/ 294.25/ CFM
Cooling fan motor Speed	920/780/720 r/min	Sound Pressure Level	41/ 37/ 33/ dB(A)
Recommended Power Cable(Core)	4	Sound Power Level	51/ 47/ 43/ dB(A)
Cross-sectional Area of Power Cable Conductor	AWG18<0.82>		

	Electrical
--	------------

Heating		Power supply	230V-1Ph -60Hz
Heating Capacity	18,700 Btu/h	Fuse Current	3.15 A
		Fan Motor Power Output	75 W
		Number of fans	3 N

Set Temperature Range ° F	61 ~ 86
---------------------------	---------

Physical & Piping

Dimension of Outline (WxDxH)	900x615x200 mm	Liquid Line connection	1/4 in
Net Weight	27 kg	Gas connection	1/2 in



1-833-666-GREE
www.greevac.ca

Manufacturer has right to change the data without notice, please refer to the name plate of the unit.