

## 208~230V Heat Recovery

Model:  
GMV-Q72WM/B-F(U)



Specifications	Unit	Parameter
Model	—	GMV-Q72WM/B-F(U)
<b>Performance</b>		
Rated Cooling Capacity ( *1 )	kBtu/h	72
Rated Heating Capacity ( *2 )	kBtu/h	81
Power Input	Cooling(kw)	5.45
	Heating(kw)	5.8
Sound Pressure Level	dB(A)	61
Operating TemperatureRange	Cooling ( Outdoor ) °C/°F	-5~52/23~125.6
	Heating ( Outdoor ) °C/°F	-20~24/-4~75
<b>AHRI Ratings(Ducted/Non-Ducted)</b>		
EER	W/W	11/11.5
IEER	—	21.5/22
COP	W/W	2.27~3.3/2.4~3.4
<b>Electrical Data</b>		
Power Supply	V/Ph/Hz	208/230/3/60
Maximum Overcurrent Protection (MOP)	A	35
Minimum Circuit Amps (MCA)	A	31
<b>Fan</b>		
Type x Quantity	—	Axial-flow×2
Air Flow Volume	CFM	8240
Fan Motor Power Output	W	750+750
Max.External Static Pressure ( ESP )	Pa/In.W.G	82/0.33
<b>Compressor</b>		
Compressor Type x Quantity	—	Inverter Scroll×1
Compressor Refrigerant Oil Type	—	FVC68D or FV-68H
Compressor Refrigerant Oil Charge Volume	L/Gal	5.1/1.35
<b>Refrigerant Piping</b>		
Connection Pipe	High Pressure Gas(mm/inch)	Φ15.90 / Φ 5/8
	Low Pressure Gas(mm/inch)	Φ19.05 / Φ3/4
	Liquid(mm/inch)	Φ9.52 / Φ3/8
Max. Equivalent Connection Pipe Length ( ODU to IDU )	m/ft	165/541
Refrigerant Charge	kg/oz	9.60/338.7
Refrigerant	—	R410A
<b>Dimension/Weight</b>		
Dimensions (H×W×D)	mm/inch	1605×1340×765 (63-1/4×52-3/4×30-1/8)
Net Weight	kg/lbs	302/666
<b>Other</b>		
Indoor Unit	Total Capacity ( % )	50%~135%
	Max Connectable Quantity	13
Certification	—	ETL/AHRI
Condenser Fin Color	—	Gold
Protection Devices	High Pressure	High pressure sensor, Highpressure switch 601 psi (4.15 MPa)
	Inverter Circuit	Over-heat protection, Over-current protection
	Compressor	Discharge temp protection, Over-current protection

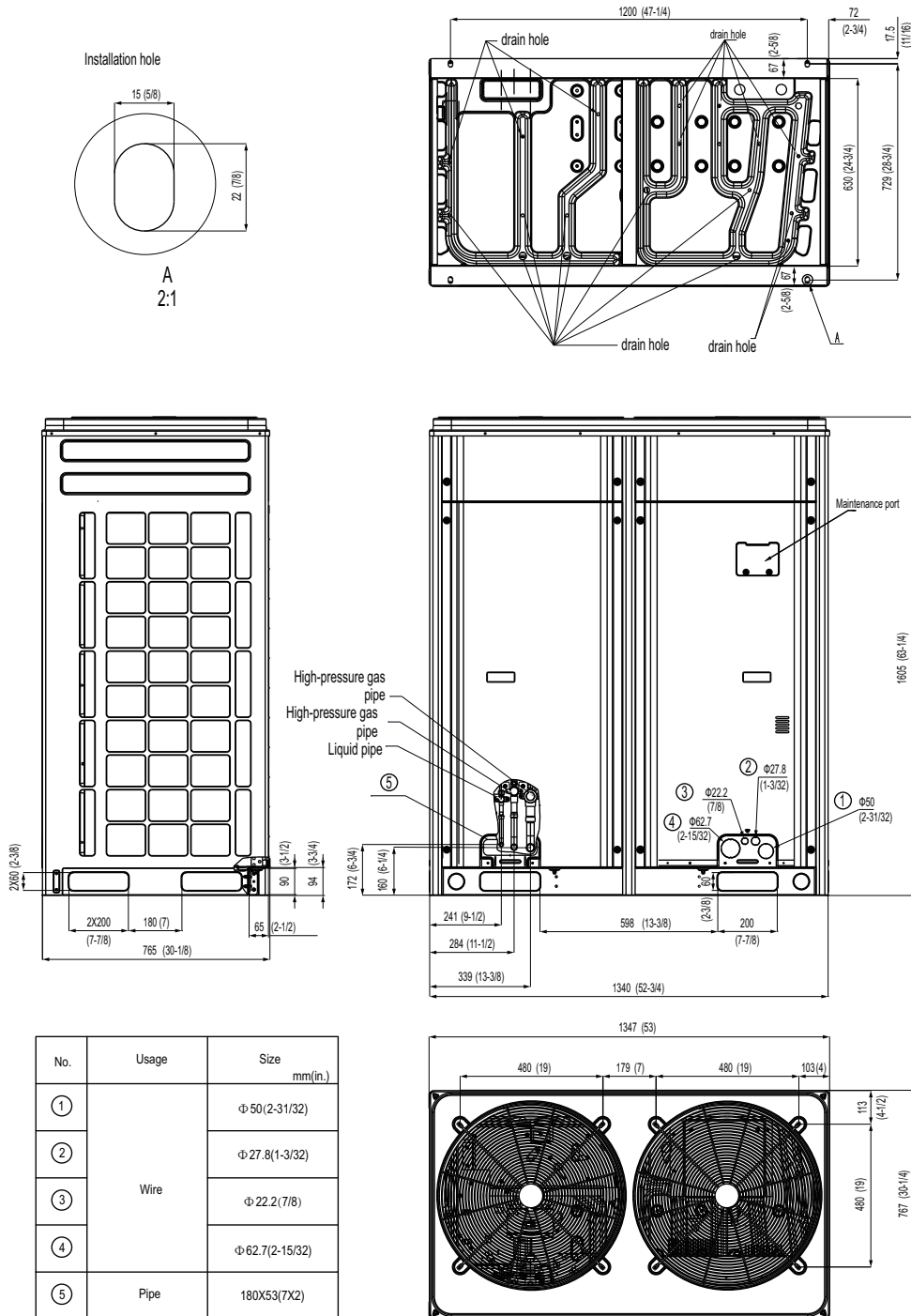
\*1 Cooling | Indoor: 80°F ( 26.7°C ) DB / 67°F ( 19°C ) WB; Outdoor: 95°F ( 35°C ) DB

\*2 Heating | Indoor: 70°F ( 21.1°C ) DB / Outdoor: 47°F ( 8.3°C ) DB / 43°F ( 6°C ) WB



Job Name:		Date:	
System Reference No.:			
Engineer Signature:			

### Outline and Physical Dimensions of GMV-Q72WM/B-F(U).



Unit:mm(in.)

