

208~230V 8 Way Cassette

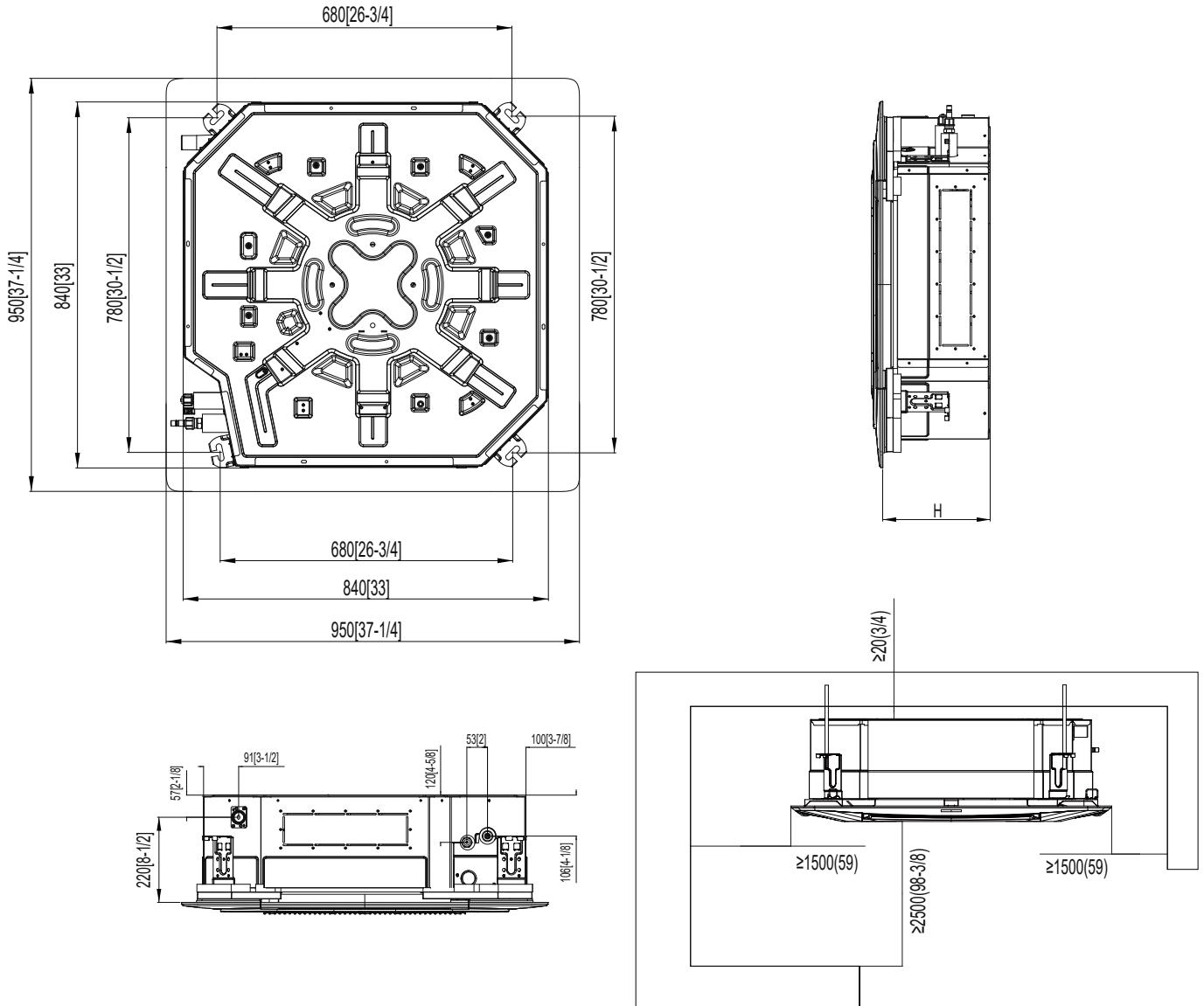
Model:GMV-ND30T/C-T(U)



Specifications	Unit	Parameter
Model	—	GMV-ND30T/C-T(U)
Performance		
Rated Cooling Capacity	kBtu/h	30
Rated Heating Capacity	kBtu/h	34
Sound Pressure Level	dB(A)	31/34/38
Electrical Data		
Power Supply	Voltage,Phase, Hertz	208/230,1,60
Maximum Overcurrent Protection (MOP)	A	15
Minimum Circuit Amps (MCA)	A	2
Fan		
Type x Quantity	—	Centrifugal×1
Air Flow Volume	CFM	530/590/735
Fan Motor Running Current	A	0.8
Fan Motor Power Output	W	90
Refrigerant Piping		
Connection Pipe	Gas(mm/inch)	Φ15.9/Φ5/8
	Liquid(mm/inch)	Φ9.52/Φ3/8
Connection method	—	Flare Connection
Refrigerant	—	R410A
Dimension/Weight		
Dimensions (H×W×D)	mm/inch	290×840×840 (11-3/8×33-1/8×33-1/8)
Net Weight	kg/lbs	33/73
Other		
Safety Certification	—	ETL

Job Name:		Date:	
System Reference No.:			
Engineer Signature:			

Outline and Physical Dimensions of GMV-ND30T/C-T(U).



model	H
GMV-ND30T/C-T(U)	330 (13)

Unit:mm(in.)

